

Supporting Information

ENANTIOSELECTIVE SYNTHESIS OF 2,4,5-TRISUBSTITUTED TETRAHYDROPYRANS VIA PEPTIDE-CATALYZED MICHAEL ADDITION FOLLOWED BY KISHI'S REDUCTIVE CYCLIZATION

Atsushi Ueda, Mei Higuchi, Tomohiro Umeno, Masakazu Tanaka

Graduate School of Biomedical Sciences, Nagasaki University, 1-14 Bunkyo-machi, Nagasaki
852-8521, Japan.

E-mail for A. Ueda: aueda@nagasaki-u.ac.jp

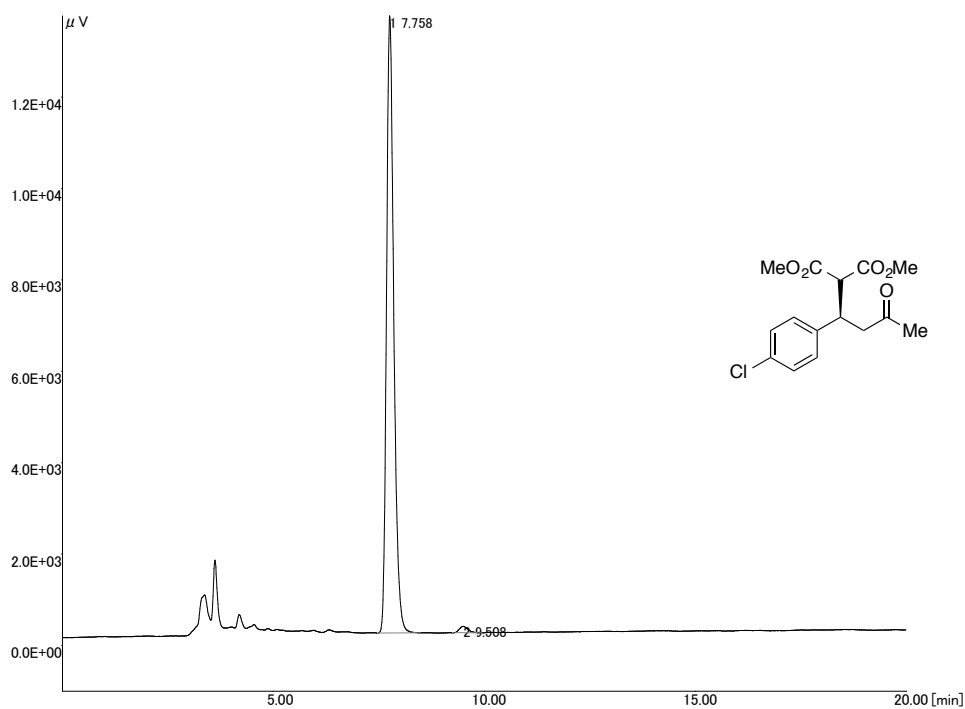
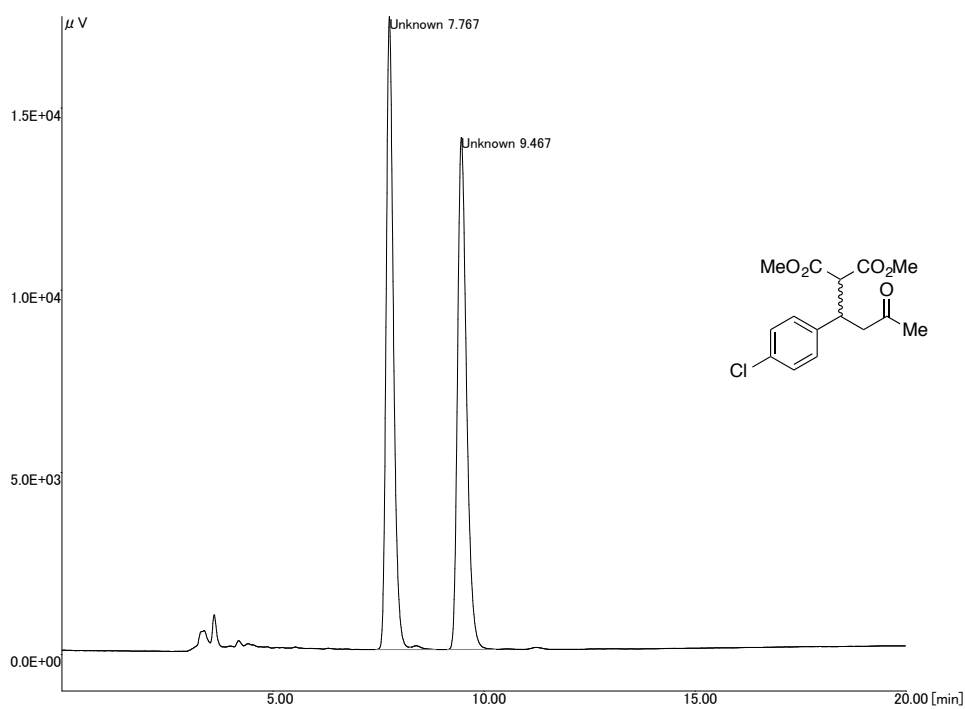
Table of Contents

1. HPLC chart	S2
---------------------	----

1. HPLC chart.

Compound **7a**

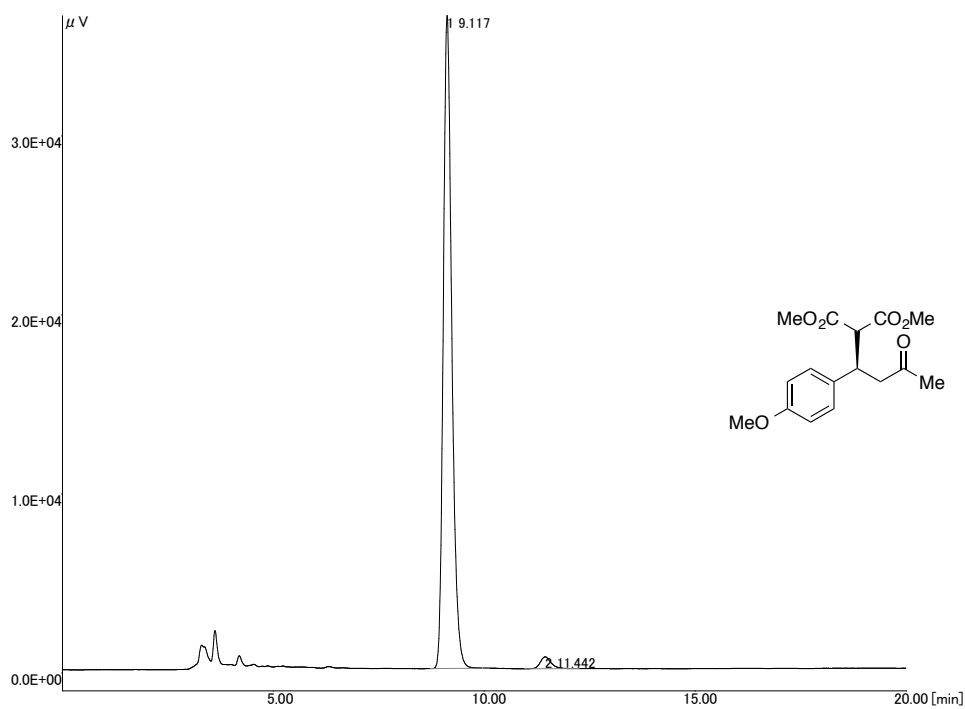
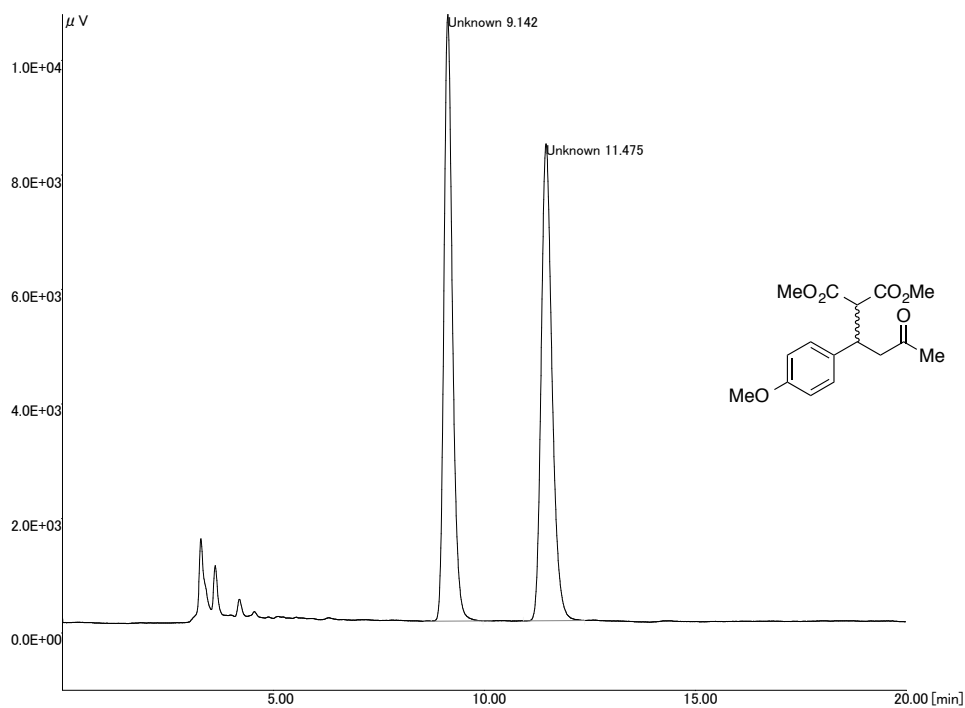
Condition: Chiralpak AD-H, 20% *i*-propanol/*n*-hexane, flow rate 1.0 mL/min.



	Retention time (min)	Area	Area (%)
1	7.758	161646	98.86
2	9.508	1869	1.14
Total		163515	100

Compound 7b

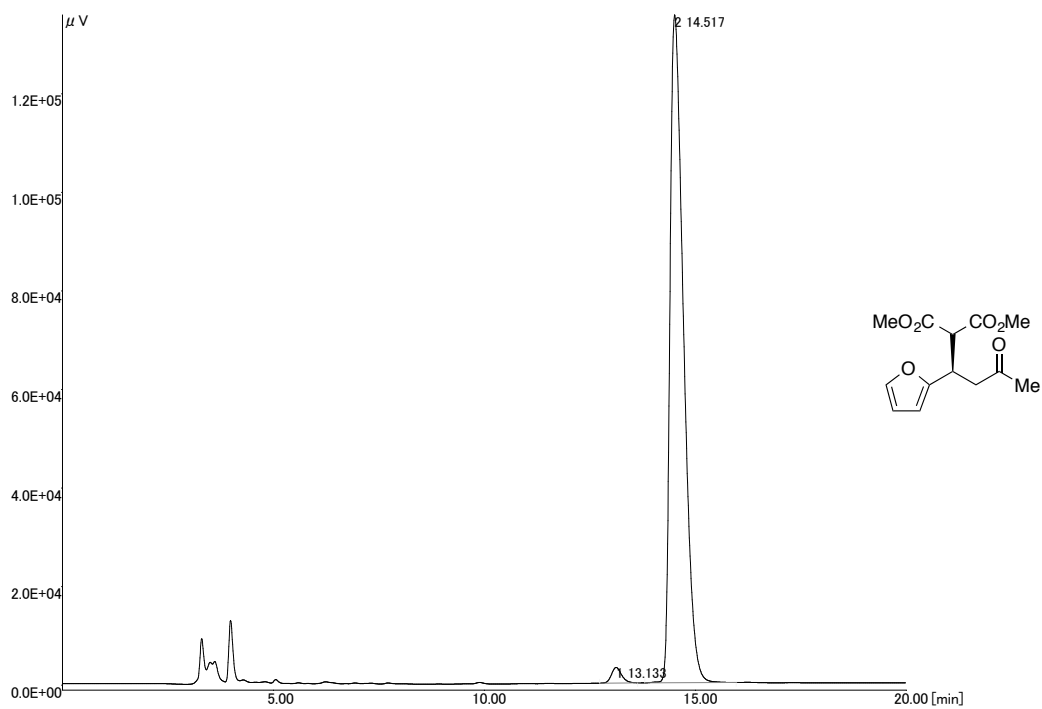
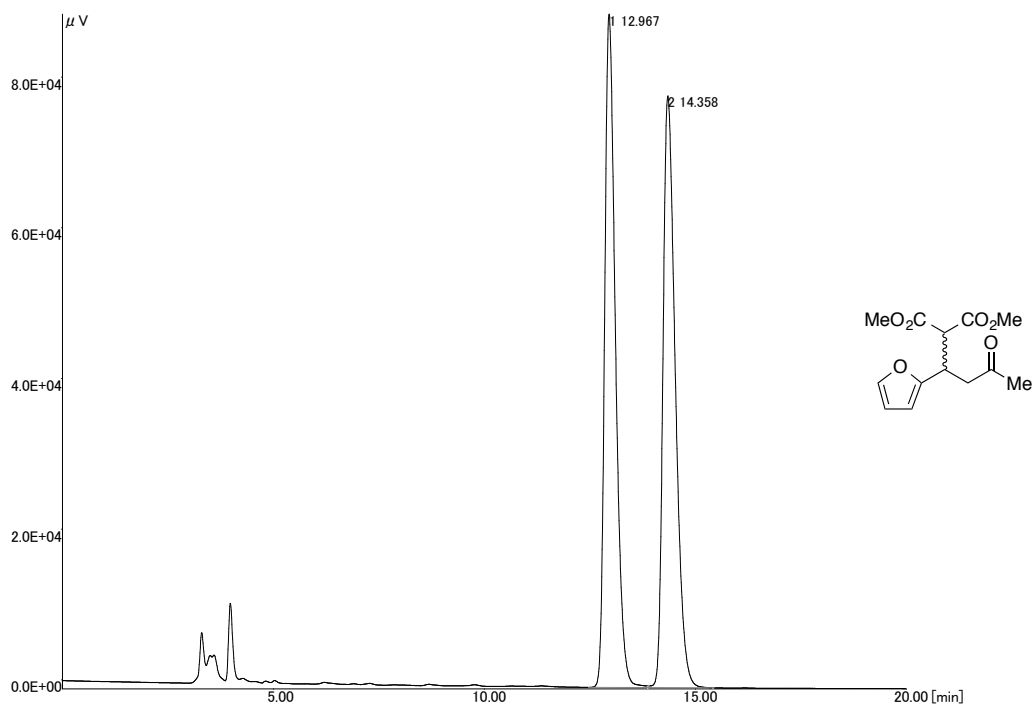
Condition: Chiralpak AD-H, 20% *i*-propanol/*n*-hexane, flow rate 1.0 mL/min.



	Retention time (min)	Area	Area (%)
1	9.117	511648	97.74
2	11.442	11836	2.26
Total		523484	100

Compound 7c

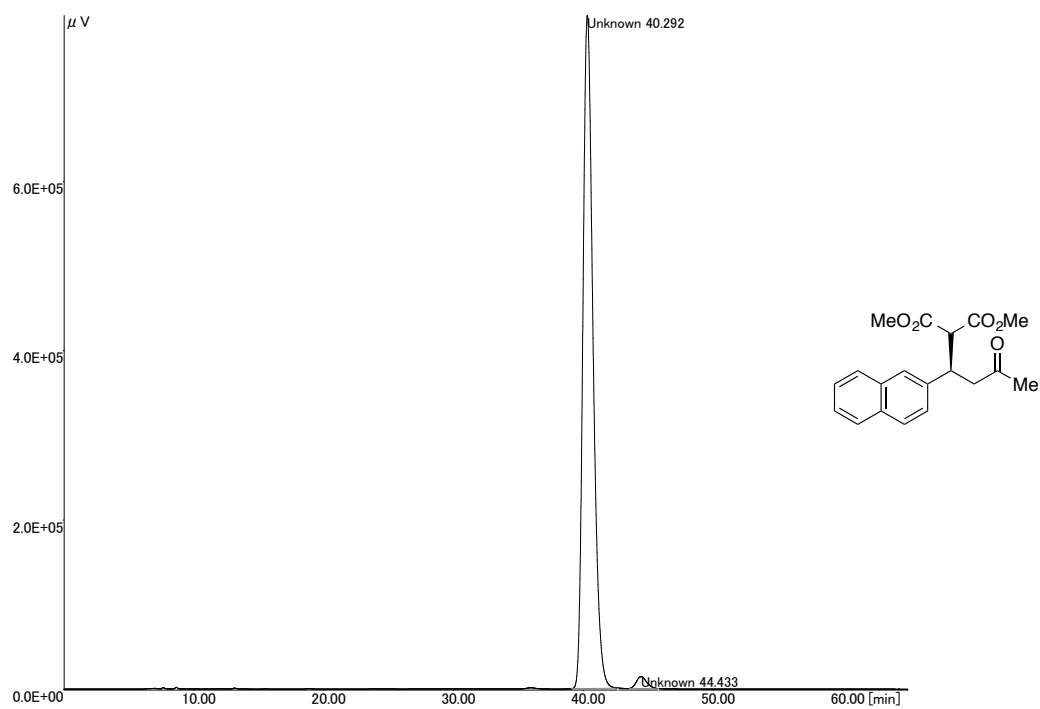
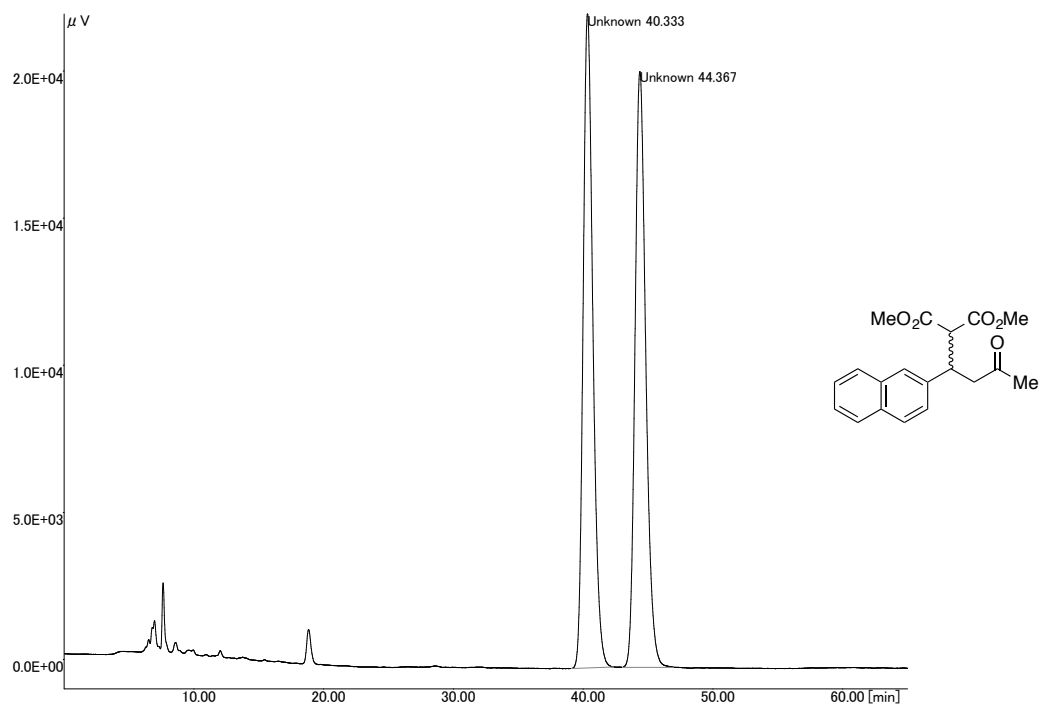
Condition: Chiralpak AD-H, 10% EtOH/*n*-hexane, flow rate 1 mL/min, wavelength 238 nm.



	Retention time (min)	Area	Area (%)
1	13.133	52931	1.73
2	14.517	3014239	98.27
Total		3067170	100

Compound 7d

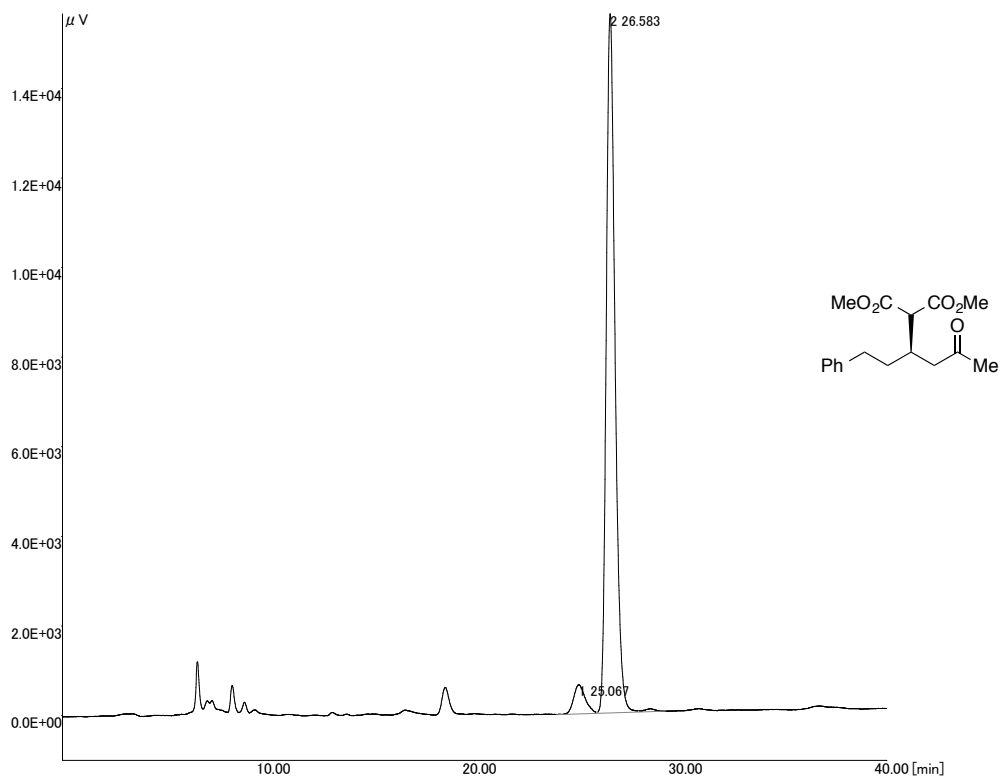
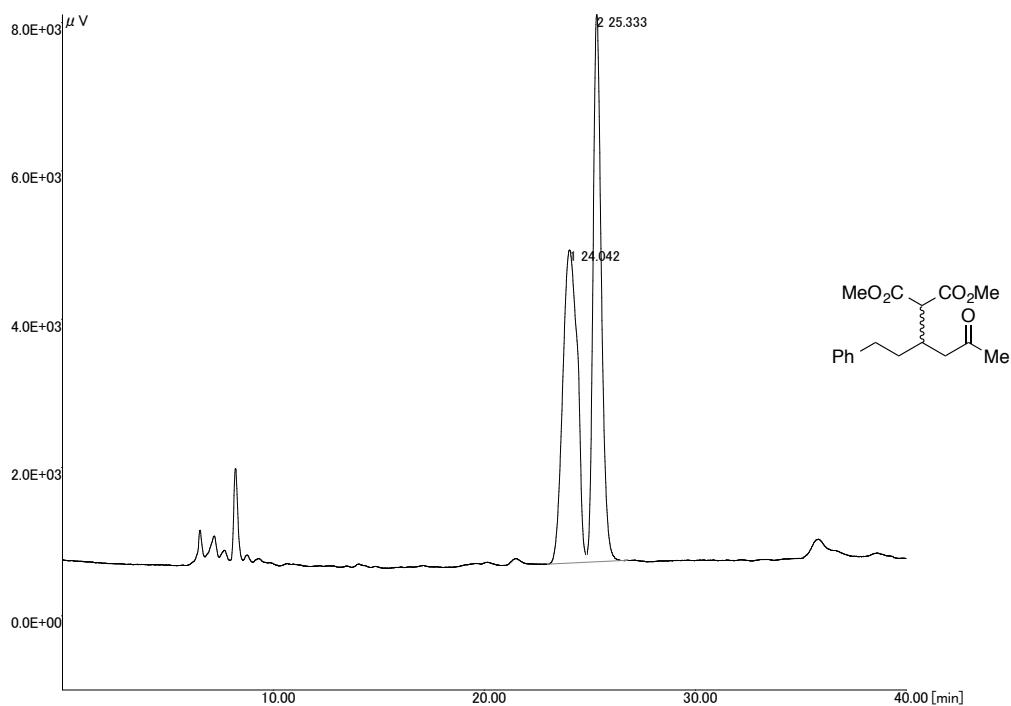
Condition: Chiralpak AD-H, 10% *i*-propanol/*n*-hexane, flow rate 0.5 mL/min.



	Retention time (min)	Area	Area (%)
1	40.292	42281125	98.23
2	44.433	760777	1.77
Total		43041902	100

Compound 7e

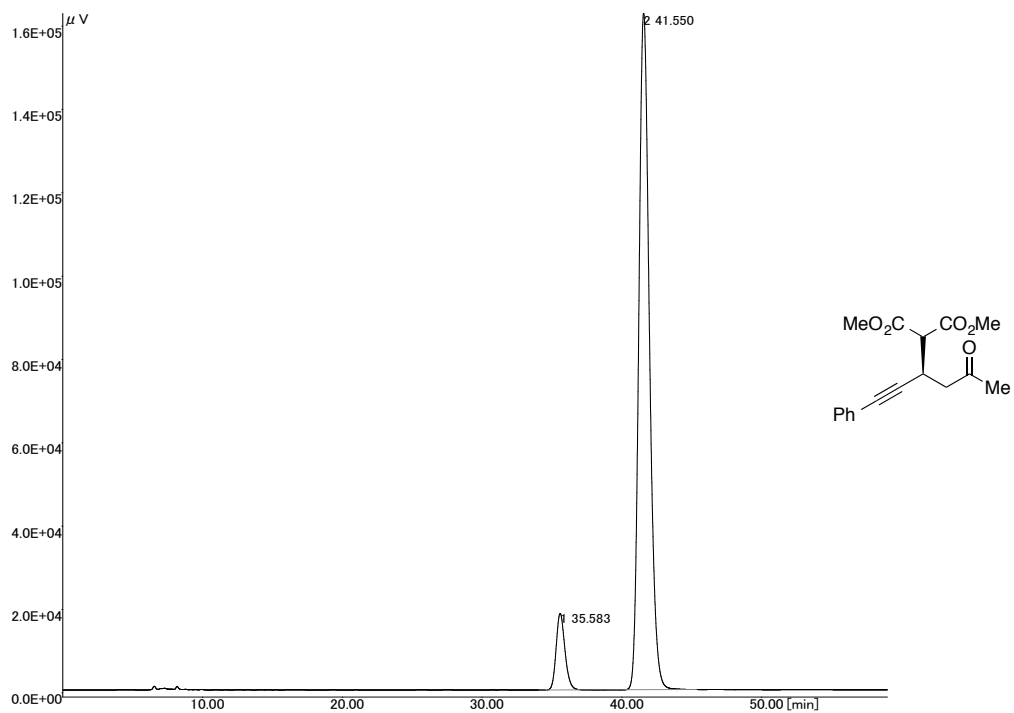
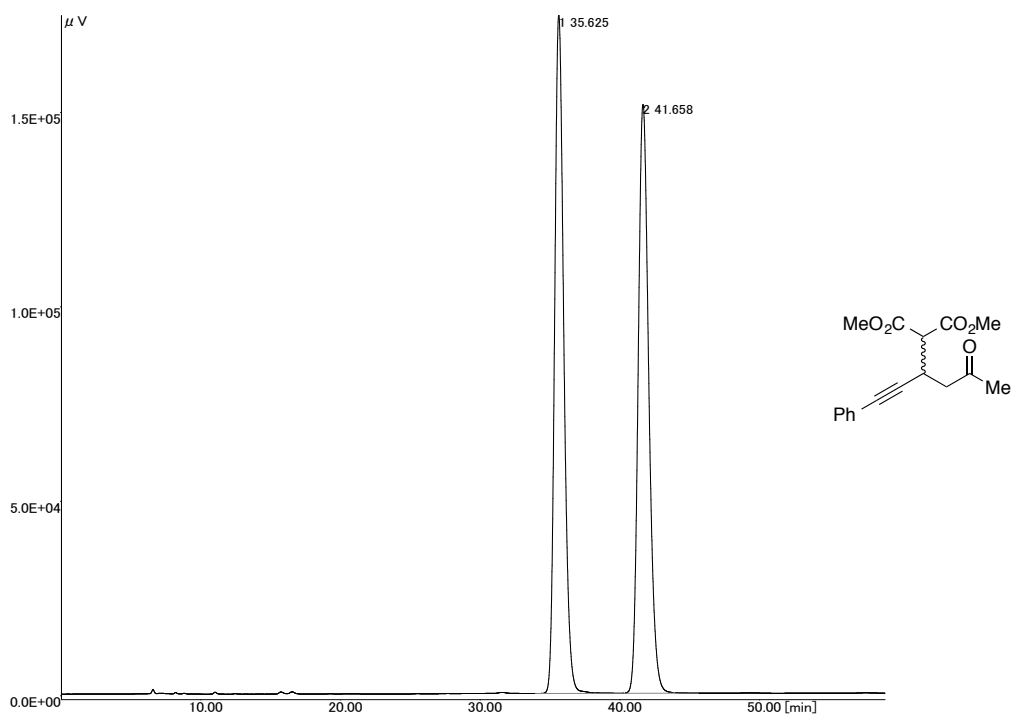
Condition: Chiralpak AD-H, 5% *i*-propanol/*n*-hexane, flow rate 0.5 mL/min.



	Retention time (min)	Area	Area (%)
1	25.067	25208	5.23
2	26.583	456438	94.77
Total		481646	100

Compound 7f

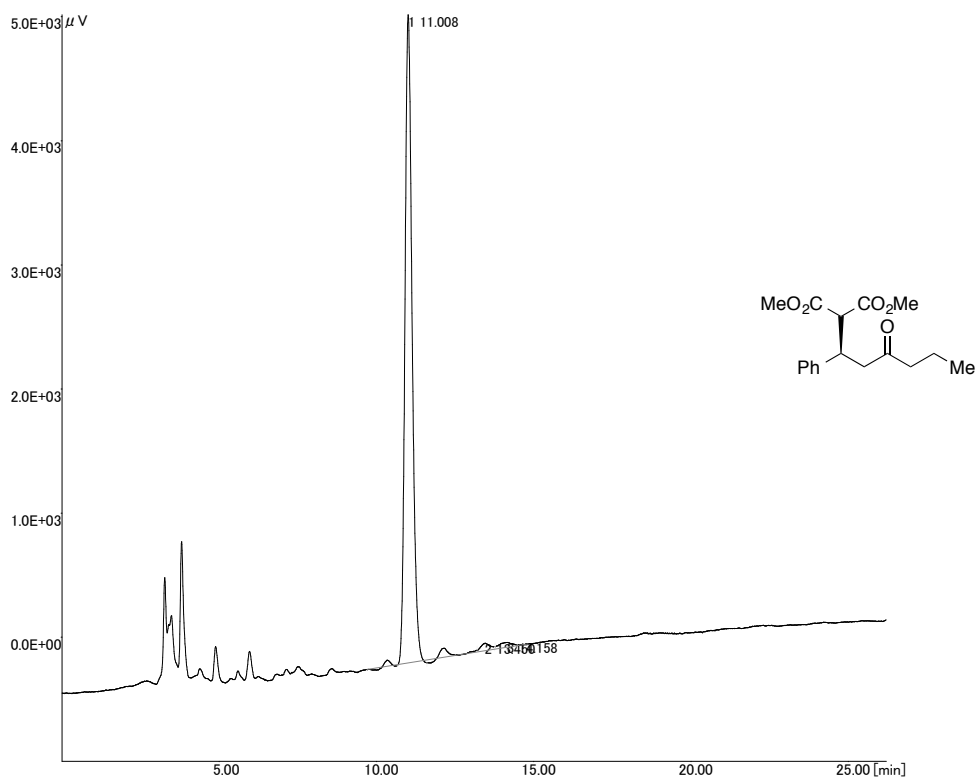
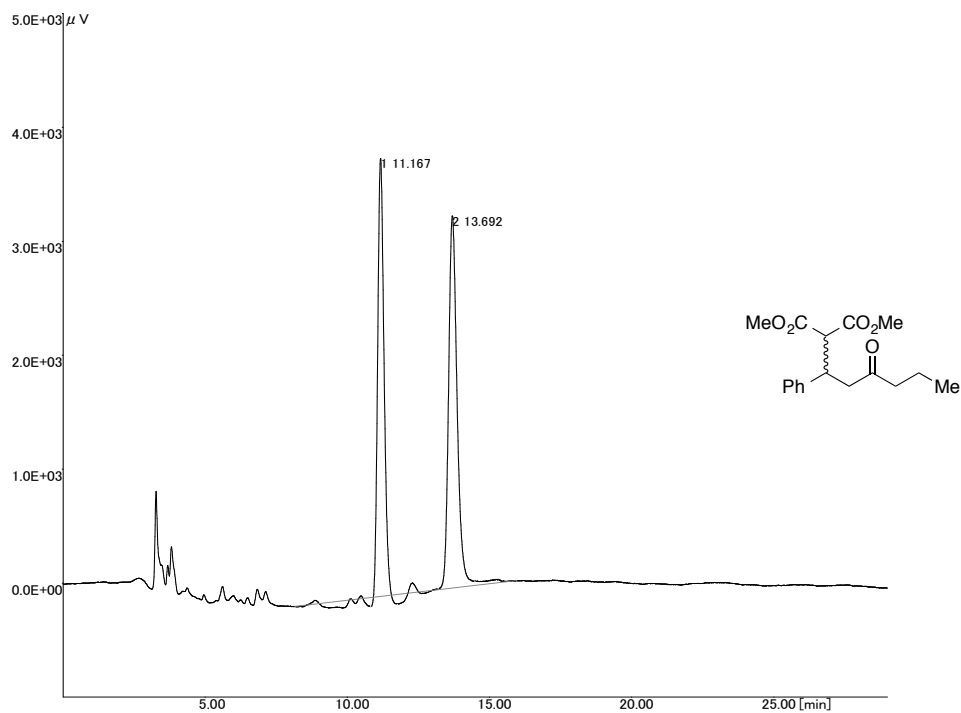
Condition: Chiralpak AD-H, 5% *i*-propanol/*n*-hexane, flow rate 0.5 mL/min.



	Retention time (min)	Area	Area (%)
1	35.6	788770	8.58
2	41.6	8411416	91.42
Total		9200186	100

Compound 7g

Condition: Chiralpak AD-H, 10% *i*-propanol/*n*-hexane, flow rate 1 mL/min.



	Retention time (min)	Area	Area (%)
1	11.0	82121	98.53
2	13.5	1222	1.47
Total		83343	100